

CERTIFICATE OF LOCATION OF GOVERNMENT CORNER

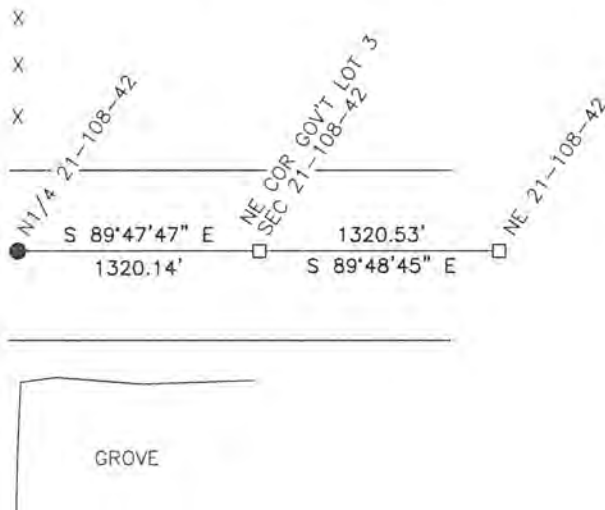
NORTH QUARTER Corner of Section 21, Township 108, Range 42, 5TH P.M.

STATE OF MINNESOTA, County of MURRAY

At the corner location shown on the sketch:

- On 10/9/15 found a 1" pipe
DATE
- left monument as found, lowered monument, removed monument (explain)
- On _____ placed a _____
DATE

SKETCH OF REFERENCE TIES



Minnesota State Plane Coordinate
 System Murray County Datum
 NAD83 (1996)
 N: 211170.916
 E: 466692.755

Statement of evidence relative to this corner location is on back of page.

I hereby certify that this document and the data contained herein was prepared by me or under my direct supervision.

[Signature] 3-21-16
SIGNATURE DATE
 Registration No. 50343

- Land Surveyor, Professional Engineer
- County Surveyor, County Engineer

OFFICE OF THE COUNTY RECORDER

County of MURRAY

I hereby certify that this document was filed in the Co. Recorders office at 11:00 A.M on the 18TH day of OCTOBER A.D. 20 16

County Recorder Cecily C. Larson

By _____, Deputy

DOCUMENT NO. _____

Statement of Evidence

On July 11, 1861, L.G.W. Fletcher did the original subdivision of the township.

On June 22, 1999, Bolton & Menk, Inc. found an iron at the corner.

On August 22, 2013, Murray County Highway Department found a 1 inch iron pipe at the corner.

On October 9, 2015, Bueltel-Moseng Land Surveying found a 1 inch iron pipe in line with fence to the north and 1'± south of the centerline.